

## Report from Republic of Korea



**United Nations**  
Convention to Combat  
Desertification

---

**praus<sub>4</sub>**

This report has been submitted by the government of Republic of Korea to the United Nations Convention to Combat Desertification (UNCCD).

The designations employed and the presentation of material in this report do not imply the expression of any opinion whatsoever on the part of the UNCCD concerning the legal status of any country, territory, city or area or of its authorities, or concerning the delimitation of its frontiers or boundaries.

## Contents

### 1. SO: Strategic objectives

- A. SO-1: To improve the condition of affected ecosystems, combat desertification/land degradation, promote sustainable land management and contribute to land degradation neutrality.
  - S01-1 Trends in land cover
  - S01-2 Trends in land productivity or functioning of the land
  - S01-3 Trends in carbon stocks above and below ground
  - S01-4 Proportion of degraded land over the total land area
  - S01 Voluntary Targets
- B. SO-2: To improve the living conditions of affected populations.
  - S02-1 Trends in population living below the relative poverty line and/or income inequality in affected areas
  - S02-2 Trends in access to safe drinking water in affected areas
  - S02-3 Trends in the proportion of population exposed to land degradation disaggregated by sex
  - S02 Voluntary Targets
- C. SO-3: To mitigate, adapt to, and manage the effects of drought in order to enhance resilience of vulnerable populations and ecosystems.
  - S03-1 Trends in the proportion of land under drought over the total land area
  - S03-2 Trends in the proportion of the population exposed to drought
  - S03-3 Trends in the degree of drought vulnerability
  - S03 Voluntary Targets
- D. SO-4: To generate global environmental benefits through effective implementation of the United Nations Convention to Combat Desertification.
  - S04-1 Trends in carbon stocks above and below ground
  - S04-2 Trends in abundance and distribution of selected species
  - S04-3 Proportion of important sites for terrestrial and freshwater biodiversity that are covered by protected areas, by ecosystem type
  - S04 Voluntary Targets
- E. SO-5: To mobilize substantial and additional financial and non-financial resources to support the implementation of the Convention by building effective partnerships at global and national level
  - S05-1 Bilateral and multilateral public resources
  - S05-2 Domestic public resources
  - S05-3 International and domestic private resources
  - S05-4 Technology transfer
  - S05-5 Future support for activities related to the implementation of the Convention

### 2. IF: Implementation Framework

- A. Financial and Non-Financial Sources
- B. Policy and Planning
- C. Action on the Ground

### 3. Other files for Reporting

### 4. Templated Maps

- A. Proportion of land that is degraded over total land area (SDG Indicator 15.3.1) in the reporting period



SO-1: To improve the condition of affected ecosystems, combat desertification/land degradation, promote sustainable land management and contribute to land degradation neutrality.

## SO1-1 Trends in land cover

### Land area

SO1-1.T1: National estimates of the total land area, the area covered by water bodies and total country area

Year	Total land area (km <sup>2</sup> )	Water bodies (km <sup>2</sup> )	Total country area (km <sup>2</sup> )	Comments
2 001	96 737	2 801	99 538	
2 005	96 843	2 803	99 646	
2 010	97 200	2 833	100 033	
2 015	97 445	2 850	100 295	
2 019	97 540	2 861	100 401	

### Land cover legend and transition matrix

SO1-1.T2: Key Degradation Processes

Degradation Process	Starting Land Cover	Ending Land Cover
---------------------	---------------------	-------------------

Are the seven UNCCD land cover classes sufficient to monitor the key degradation processes in your country?

- Yes  
 No

SO1-1.T4: UNCCD land cover legend transition matrix

Original/ Final	Tree-covered areas	Grasslands	Croplands	Wetlands	Artificial surfaces	Other Lands	Water bodies
Tree-covered areas	0	-	-	-	-	-	0
Grasslands	+	0	+	-	-	-	0
Croplands	+	-	0	-	-	-	0
Wetlands	-	-	-	0	-	-	0
Artificial surfaces	+	+	+	+	0	+	0
Other Lands	+	+		+	-	0	0
Water bodies	0	0	0	0	0	0	0

### Land cover

SO1-1.T5: National estimates of land cover (km<sup>2</sup>) for the baseline and reporting period

	Tree-covered areas (km <sup>2</sup> )	Grasslands (km <sup>2</sup> )	Croplands (km <sup>2</sup> )	Wetlands (km <sup>2</sup> )	Artificial surfaces (km <sup>2</sup> )	Other Lands (km <sup>2</sup> )	Water bodies (km <sup>2</sup> )	No data (km <sup>2</sup> )
2000	64 221	552	18 888	2 836	10 160	0	2 804	
2001	64 159	556	18 761	2 859	10 401	0	2 801	
2002	64 119	561	18 626	2 882	10 597	0	2 800	
2003	64 063	563	18 460	2 910	10 807	0	2 797	
2004	64 003	565	18 356	2 916	10 977	0	2 799	
2005	63 939	572	18 240	2 925	11 166	0	2 803	
2006	63 894	578	18 005	2 926	11 451	0	2 824	
2007	63 824	583	17 816	2 978	11 687	0	2 831	

SO-1: To improve the condition of affected ecosystems, combat desertification/land degradation, promote sustainable land management and contribute to land degradation neutrality.

	Tree-covered areas (km <sup>2</sup> )	Grasslands (km <sup>2</sup> )	Croplands (km <sup>2</sup> )	Wetlands (km <sup>2</sup> )	Artificial surfaces (km <sup>2</sup> )	Other Lands (km <sup>2</sup> )	Water bodies (km <sup>2</sup> )	No data (km <sup>2</sup> )
2008	63 749	583	17 588	3 050	12 018	0	2 839	
2009	63 703	583	17 368	3 088	12 318	0	2 837	
2010	63 688	581	17 153	3 099	12 678	0	2 833	
2011	63 478	582	16 980	3 113	13 155	0	2 841	
2012	63 399	580	17 300	3 122	12 945	0	2 842	
2013	63 394	578	17 114	3 146	13 193	0	2 840	
2014	63 422	573	16 911	3 143	13 386	0	2 849	
2015	63 346	570	16 790	3 152	13 587	0	2 850	
2016	63 263	568	16 436	3 179	14 042	0	2 851	
2017	63 180	565	16 208	3 180	14 371	0	2 860	
2018	63 060	562	15 956	3 183	14 757	0	2 860	
2019	62 993	561	15 810	3 200	14 977	0	2 861	
2020	62 981	562	15 648	3 202	15 157	0	2 862	

### Land cover change

SO1-1.T6: National estimates of land cover change (km<sup>2</sup>) for the baseline period

	Tree-covered areas (km <sup>2</sup> )	Grasslands (km <sup>2</sup> )	Croplands (km <sup>2</sup> )	Wetlands (km <sup>2</sup> )	Artificial surfaces (km <sup>2</sup> )	Other Lands (km <sup>2</sup> )	Water bodies (km <sup>2</sup> )	Total (km <sup>2</sup> )
Tree-covered areas (km <sup>2</sup> )								0
Grasslands (km <sup>2</sup> )								0
Croplands (km <sup>2</sup> )								0
Wetlands (km <sup>2</sup> )								0
Artificial surfaces (km <sup>2</sup> )								0
Other Lands (km <sup>2</sup> )								0
Water bodies (km <sup>2</sup> )								0
Total	0	0	0	0	0	0	0	0

SO1-1.T7: National estimates of land cover change (km<sup>2</sup>) for the reporting period

	Tree-covered areas (km <sup>2</sup> )	Grasslands (km <sup>2</sup> )	Croplands (km <sup>2</sup> )	Wetlands (km <sup>2</sup> )	Artificial surfaces (km <sup>2</sup> )	Other Lands (km <sup>2</sup> )	Water bodies (km <sup>2</sup> )	Total land area (km <sup>2</sup> )
Tree-covered areas (km <sup>2</sup> )								0
Grasslands (km <sup>2</sup> )								0
Croplands (km <sup>2</sup> )								0
Total	0	0	0	0	0	0	0	0

SO-1: To improve the condition of affected ecosystems, combat desertification/land degradation, promote sustainable land management and contribute to land degradation neutrality.

	Tree-covered areas (km <sup>2</sup> )	Grasslands (km <sup>2</sup> )	Croplands (km <sup>2</sup> )	Wetlands (km <sup>2</sup> )	Artificial surfaces (km <sup>2</sup> )	Other Lands (km <sup>2</sup> )	Water bodies (km <sup>2</sup> )	Total land area (km <sup>2</sup> )
Wetlands (km <sup>2</sup> )								0
Artificial surfaces (km <sup>2</sup> )								0
Other Lands (km <sup>2</sup> )								0
Water bodies (km <sup>2</sup> )								0
Total	0	0	0	0	0	0	0	0

### Land cover degradation

SO1-1.T8: National estimates of land cover degradation (km<sup>2</sup>) in the baseline period

	Area (km <sup>2</sup> )	Percent of total land area (%)
Land area with degraded land cover		0.0
Land area with non-degraded land cover		0.0
Land area with no land cover data		0.0

SO1-1.T9: National estimates of land cover degradation (km<sup>2</sup>) in the reporting period

	Area (km <sup>2</sup> )	Percent of total land area (%)
Land area with improved land cover		0.0
Land area with stable land cover		0.0
Land area with degraded land cover		0.0
Land area with no land cover data		0.0

### General comments

Sources: Statistical Year Book of Forestry from the Korea Forest Service (for tree-covered areas); Cadastral Statistics from the Ministry of Land, Infrastructure and Transport (for wetland, grassland, and artificial surfaces); Agricultural Area Survey from Statistics Korea (for cropland); 2021 National Greenhouse Gas Inventory Report of Korea. Please note that the data for grassland refer to pasture areas only, excluding natural grassland areas. The National Institute of Forest Science, the National Institute of Agricultural Sciences, and the National Institute of Animal Science also provided national data.

## SO1-2 Trends in land productivity or functioning of the land

### Land productivity dynamics

SO1-2.T1: National estimates of land productivity dynamics (in km<sup>2</sup>) within each land cover class for the baseline period

Land cover class	Net land productivity dynamics (km <sup>2</sup> ) for the baseline period					
	Declining (km <sup>2</sup> )	Moderate Decline (km <sup>2</sup> )	Stressed (km <sup>2</sup> )	Stable (km <sup>2</sup> )	Increasing (km <sup>2</sup> )	No Data (km <sup>2</sup> )
Tree-covered areas						
Grasslands						
Croplands						
Wetlands						
Artificial surfaces						
Other Lands						
Water bodies						

SO1-2.T2: National estimates of land productivity dynamics (in km<sup>2</sup>) within each land cover class for the reporting period.

Land cover class	Net land productivity dynamics (km <sup>2</sup> ) for the reporting period					
	Declining (km <sup>2</sup> )	Moderate Decline (km <sup>2</sup> )	Stressed (km <sup>2</sup> )	Stable (km <sup>2</sup> )	Increasing (km <sup>2</sup> )	No Data (km <sup>2</sup> )
Tree-covered areas						
Grasslands						
Croplands						
Wetlands						
Artificial surfaces						
Other Lands						
Water bodies						

SO1-2.T3: National estimates of land productivity dynamics for areas where a land conversion to a new land cover class has taken place (in km<sup>2</sup>) for the baseline period.

Land Conversion		Net land productivity dynamics (km <sup>2</sup> ) for the baseline period					
From	To	Net area change (km <sup>2</sup> )	Declining (km <sup>2</sup> )	Moderate Decline (km <sup>2</sup> )	Stressed (km <sup>2</sup> )	Stable (km <sup>2</sup> )	Increasing (km <sup>2</sup> )
Tree-covered areas	Croplands						
Croplands	Artificial surfaces						
Grasslands	Artificial surfaces						
Croplands	Tree-covered areas						

SO1-2.T4: National estimates of land productivity dynamics for areas where a land conversion to a new land cover class has taken place (in km<sup>2</sup>) for the reporting period.

Land Conversion		Net land productivity dynamics (km <sup>2</sup> ) for the reporting period					
From	To	Net area change (km <sup>2</sup> )	Declining (km <sup>2</sup> )	Moderate Decline (km <sup>2</sup> )	Stressed (km <sup>2</sup> )	Stable (km <sup>2</sup> )	Increasing (km <sup>2</sup> )

SO-1: To improve the condition of affected ecosystems, combat desertification/land degradation, promote sustainable land management and contribute to land degradation neutrality.

Land Conversion		Net land productivity dynamics (km <sup>2</sup> ) for the reporting period					
From	To	Net area change (km <sup>2</sup> )	Declining (km <sup>2</sup> )	Moderate Decline (km <sup>2</sup> )	Stressed (km <sup>2</sup> )	Stable (km <sup>2</sup> )	Increasing (km <sup>2</sup> )
Tree-covered areas	Croplands						
Croplands	Artificial surfaces						
Grasslands	Artificial surfaces						
Croplands	Tree-covered areas						

### Land Productivity degradation

SO1-2.T5: National estimates of land productivity degradation in the baseline period

	Area (km <sup>2</sup> )	Percent of total land area (%)
Land area with degraded land productivity		0.0
Land area with non-degraded land productivity		0.0
Land area with no land productivity data		0.0

SO1-2.T6: National estimates of land productivity degradation in the reporting period

	Area (km <sup>2</sup> )	Percent of total land area (%)
Land area with improved land productivity		0.0
Land area with stable land productivity		0.0
Land area with degraded land productivity		0.0
Land area with no land productivity data		0.0

### General comments

The ROK is in an early stage of developing data on land productivity and will provide data when national data are available. At the moment, we will have to remove the default data from the form as we do not have the national data available to verify them.



## SO1-3 Trends in carbon stocks above and below ground

### Soil organic carbon stocks

SO1-3.T1: National estimates of the soil organic carbon stock in topsoil (0-30 cm) within each land cover class (in tonnes per hectare).

Year	Soil organic carbon stock in topsoil (t/ha)						
	Tree-covered areas	Grasslands	Croplands	Wetlands	Artificial surfaces	Other Lands	Water bodies
2000							
2001							
2002							
2003							
2004							
2005							
2006							
2007							
2008							
2009							
2010							
2011							
2012							
2013							
2014							
2015							
2016							
2017							
2018							
2019							
2020							

If you opted not to use default Tier 1 data, what did you use to calculate the estimates above?

- Modified Tier 1 methods and data
- Tier 2 (additional use of country-specific data)
- Tier 3 (more complex methods involving ground measurements and modelling)

SO1-3.T2: National estimates of the change in soil organic carbon stock in soil due to land conversion to a new land cover class in the baseline period

Land Conversion		Soil organic carbon (SOC) stock change in the baseline period					
From	To	Net area change (km <sup>2</sup> )	Initial SOC stock (t/ha)	Final SOC stock (t/ha)	Initial SOC stock total (t)	Final SOC stock total (t)	SOC stock change (t)
Croplands	Tree-covered areas		-	-			0
Croplands	Artificial surfaces		-	-			0
Grasslands	Artificial surfaces		-	-			0

SO-1: To improve the condition of affected ecosystems, combat desertification/land degradation, promote sustainable land management and contribute to land degradation neutrality.

Land Conversion		Soil organic carbon (SOC) stock change in the baseline period					
From	To	Net area change (km <sup>2</sup> )	Initial SOC stock (t/ha)	Final SOC stock (t/ha)	Initial SOC stock total (t)	Final SOC stock total (t)	SOC stock change (t)
Tree-covered areas	Croplands		-	-			0

SO1-3.T3: National estimates of the change in soil organic carbon stock in soil due to land conversion to a new land cover class in the reporting period

Land Conversion		Soil organic carbon (SOC) stock change in the reporting period					
From	To	Net area change (km <sup>2</sup> )	Initial SOC stock (t/ha)	Final SOC stock (t/ha)	Initial SOC stock total (t)	Final SOC stock total (t)	SOC stock change (t)
Croplands	Tree-covered areas		-	-			0
Grasslands	Artificial surfaces		-	-			0
Tree-covered areas	Croplands		-	-			0
Croplands	Artificial surfaces		-	-			0

### Soil organic carbon stock degradation

SO1-3.T4: National estimates of soil organic carbon stock degradation in the baseline period

	Area (km <sup>2</sup> )	Percent of total land area (%)
Land area with degraded soil organic carbon (SOC)		0.0
Land area with non-degraded SOC		0.0
Land area with no SOC data		0.0

SO1-3.T5: National estimates of SOC stock degradation in the reporting period

	Area (km <sup>2</sup> )	Percent of total land area (%)
Land area with improved SOC		0.0
Land area with stable SOC		0.0
Land area with degraded SOC		0.0
Land area with no SOC data		0.0

### General comments

The ROK is currently monitoring SOC as well as developing a national SOC database. Based on the currently available national data, the provided default values appear to be overestimated.

## SO1-4 Proportion of degraded land over the total land area

### Proportion of degraded land over the total land area (Sustainable Development Goal Indicator 15.3.1)

SO1-4.T1: National estimates of the total area of degraded land (in km<sup>2</sup>), and the proportion of degraded land relative to the total land area

	Total area of degraded land (km <sup>2</sup> )	Proportion of degraded land over the total land area (%)
Baseline Period		0.0
Reporting Period		0.0
Change in degraded extent	0	

#### Method

Did you use the SO1-1, SO1-2 and SO1-3 indicators (i.e. land cover, land productivity dynamics and soil organic carbon stock) to compute the proportion of degraded land?

Which indicators did you use?

- Land Cover
- Land Productivity Dynamics
- SOC Stock

Did you apply the one-out, all-out principle to compute the proportion of degraded land?

- Yes
- No

#### Level of Confidence

Indicate your country's level of confidence in the assessment of the proportion of degraded land:

- High (based on comprehensive evidence)
- Medium (based on partial evidence)
- Low (based on limited evidence)

Describe why the assessment has been given the level of confidence selected above:

#### False positives/ False negatives

SO1-4.T3: Justify why any area identified as degraded or non-degraded in the SO1-1, SO1-2 or SO1-3 indicator data should or should not be included in the overall Sustainable Development Goal indicator 15.3.1 calculation.

Location Name	Type	Recode Options	Area (km <sup>2</sup> )	Process driving false +/- outcome	Basis for Judgement	Edit Polygon
---------------	------	----------------	-------------------------	-----------------------------------	---------------------	--------------

### Perform qualitative assessments of areas identified as degraded or improved

#### SO1-4.T4: Degradation hotspots

Hotspots	Location	Area (km <sup>2</sup> )	Assessment Process	Direct drivers of land degradation hotspots	Action(s) taken to redress degradation in terms of Land Degradation Neutrality response hierarchy	Remediating action(s) (both forward-looking and current)	Edit Polygon
Total no. of hotspots	0						
Total hotspot area	0						

What is/are the indirect driver(s) of land degradation at the national level?

S0-1: To improve the condition of affected ecosystems, combat desertification/land degradation, promote sustainable land management and contribute to land degradation neutrality.

- 1.
- 2.
- 3.
- 4.
- 5.

#### S01-4.T5: Improvement brightspots

Brightspots	Location	Area (km <sup>2</sup> )	Assessment Process	What action(s) led to the brightspot in terms of the Land Degradation Neutrality hierarchy?	Implementing action(s) (both forward-looking and current)	Edit Polygon
Total no. of brightspots		0				
Total brightspot area		0				

What are the enabling and instrumental responses at the national level driving the occurrence of brightspots?

- 1.
- 2.
- 3.
- 4.
- 5.
- 6.
- 7.
- 8.
- 9.
- 10.

General comments

SO-1: To improve the condition of affected ecosystems, combat desertification/land degradation, promote sustainable land management and contribute to land degradation neutrality.

## S01 Voluntary Targets

S01-VT.T1: Voluntary Land Degradation Neutrality targets and other targets relevant to strategic objective 1

Target	Year	Location(s)	Total Target Area (km <sup>2</sup> )	Overarching type of Land Degradation Neutrality (LDN) intervention	Targeted action(s)	Status of target achievement	Is this an LDN target? If so, under which process was it defined/adopted?	Which other important goals are also being addressed by this target?	Edit Polygon
Total			Sum of all targeted areas 0						

S01.IA.T1: Areas of implemented action related to the targets (projects and initiatives on the ground).

Relevant Target	Implemented Action	Location (placename)	Action start date	Extent of action	Total Area Implemented So Far (km <sup>2</sup> )	Edit Polygon
					Sum of all areas relevant to actions under the same target	

General comments

## SO2-1 Trends in population living below the relative poverty line and/or income inequality in affected areas

### Relevant metric

Choose the metric that is relevant to your country:

- Proportion of population below the international poverty line
- Income inequality (Gini Index)

Proportion of population below the international poverty line

SO2-1.T1: National estimates of the proportion of population below the international poverty line

Year	Proportion of population below international poverty line (%)
2 000	
2 001	
2 002	
2 003	
2 004	
2 005	
2 006	
2 007	
2 008	
2 009	
2 010	
2 011	
2 012	
2 013	
2 014	
2 015	
2 016	
2 017	
2 018	
2 019	
2 020	

### Qualitative assessment

SO2-1.T3: Interpretation of the indicator

Indicator metric	Change in the indicator	Comments

### General comments

## SO2-2 Trends in access to safe drinking water in affected areas

### Proportion of population using safely managed drinking water services

SO2-2.T1: National estimates of the proportion of population using safely managed drinking water services

Year	Urban (%)	Rural (%)	Total (%)
2000			
2001			
2002			
2003			
2004			
2005			
2006			
2007			
2008			
2009			
2010			
2011			
2012			
2013			
2014			
2015			
2016			
2017			
2018			
2019			
2020			

### Qualitative assessment

SO2-2.T2: Interpretation of the indicator

Change in the indicator	Comments

### General comments

## SO2-3 Trends in the proportion of population exposed to land degradation disaggregated by sex

### Proportion of the population exposed to land degradation disaggregated by sex

SO2-3.T1: National estimates of the proportion of population exposed to land degradation disaggregated by sex.

Time period	Population exposed (count)	Percentage of total population exposed (%)	Female population exposed (count)	Percentage of total female population exposed (%)	Male population exposed (count)	Percentage of total male population exposed (%)
Baseline period		0.0		0.0		0.0
Reporting period		0.0		0.0		0.0

### Qualitative assessment

SO2-3.T2: Interpretation of the indicator

Change in the indicator	Comments

### General comments



SO-2: To improve the living conditions of affected populations.

## SO2 Voluntary Targets

SO2-VT.T1

Target	Year	Level of application	Status of target achievement	Comments
--------	------	----------------------	------------------------------	----------

[General comments](#)

**SO3-1 Trends in the proportion of land under drought over the total land area**

**Drought hazard indicator**

SO3-1.T1: National estimates of the land area in each drought intensity class as defined by the Standardized Precipitation Index (SPI) or other nationally relevant drought indices

	Drought intensity classes				
	Mild drought (km <sup>2</sup> )	Moderate drought (km <sup>2</sup> )	Severe drought (km <sup>2</sup> )	Extreme drought (km <sup>2</sup> )	Non-drought (km <sup>2</sup> )
2000					
2001					
2002					
2003					
2004					
2005					
2006					
2007					
2008					
2009					
2010					
2011					
2012					
2013					
2014					
2015					
2016					
2017					
2018					
2019					
2020					
2021					

SO3-1.T2: Summary table for land area under drought without class break down

	Total area under drought (km <sup>2</sup> )	Proportion of land under drought (%)
2000		0.0
2001		0.0
2002		0.0
2003		0.0
2004		0.0
2005		0.0
2006		0.0
2007		0.0
2008		0.0
2009		0.0
2010		0.0
2011		0.0

SO-3: To mitigate, adapt to, and manage the effects of drought in order to enhance resilience of vulnerable populations and ecosystems.

	Total area under drought (km <sup>2</sup> )	Proportion of land under drought (%)
2012		0.0
2013		0.0
2014		0.0
2015		0.0
2016		0.0
2017		0.0
2018		0.0
2019		0.0
2020		-
2021		-

Qualitative assessment:

General comments

## SO3-2 Trends in the proportion of the population exposed to drought

### Drought exposure indicator

Exposure is defined in terms of the number of people who are exposed to drought as calculated from the SO3-1 indicator data.

SO3-2.T1: National estimates of the percentage of the total population within each drought intensity class as well as the total population count and the proportion of the national population exposed to drought regardless of intensity.

Reporting year	Non-exposed		Mild drought		Moderate drought		Severe drought		Extreme drought		Exposed population	
	Population count	%	Population count	%	Population count	%	Population count	%	Population count	%	Population count	%
2000		-		-		-		-		-	0	-
2001		-		-		-		-		-	0	-
2002		-		-		-		-		-	0	-
2003		-		-		-		-		-	0	-
2004		-		-		-		-		-	0	-
2005		-		-		-		-		-	0	-
2006		-		-		-		-		-	0	-
2007		-		-		-		-		-	0	-
2008		-		-		-		-		-	0	-
2009		-		-		-		-		-	0	-
2010		-		-		-		-		-	0	-
2011		-		-		-		-		-	0	-
2012		-		-		-		-		-	0	-
2013		-		-		-		-		-	0	-
2014		-		-		-		-		-	0	-
2015		-		-		-		-		-	0	-
2016		-		-		-		-		-	0	-
2017		-		-		-		-		-	0	-
2018		-		-		-		-		-	0	-
2019		-		-		-		-		-	0	-
2020		-		-		-		-		-	-	-
2021		-		-		-		-		-	-	-

SO3-2.T2: National estimates of the percentage of the female population within each drought intensity class.

Reporting year	Non-exposed		Mild drought		Moderate drought		Severe drought		Extreme drought		Exposed female population	
	Population count	%	Population count	%	Population count	%	Population count	%	Population count	%	Population count	%
2000		-		-		-		-		-	0	-
2001		-		-		-		-		-	0	-
2002		-		-		-		-		-	0	-
2003		-		-		-		-		-	0	-
2004		-		-		-		-		-	0	-
2005		-		-		-		-		-	0	-
2006		-		-		-		-		-	0	-
2007		-		-		-		-		-	0	-

SO-3: To mitigate, adapt to, and manage the effects of drought in order to enhance resilience of vulnerable populations and ecosystems.

Reporting year	Non-exposed		Mild drought		Moderate drought		Severe drought		Extreme drought		Exposed female population	
	Population count	%	Population count	%	Population count	%	Population count	%	Population count	%	Population count	%
2008		-		-		-		-		-	0	-
2009		-		-		-		-		-	0	-
2010		-		-		-		-		-	0	-
2011		-		-		-		-		-	0	-
2012		-		-		-		-		-	0	-
2013		-		-		-		-		-	0	-
2014		-		-		-		-		-	0	-
2015		-		-		-		-		-	0	-
2016		-		-		-		-		-	0	-
2017		-		-		-		-		-	0	-
2018		-		-		-		-		-	0	-
2019		-		-		-		-		-	0	-
2020		-		-		-		-		-	-	-
2021		-		-		-		-		-	-	-

SO3-2.T3: National estimates of the percentage of the male population within each drought intensity class.

Reporting year	Non-exposed		Mild drought		Moderate drought		Severe drought		Extreme drought		Exposed male population	
	Population count	%	Population count	%	Population count	%	Population count	%	Population count	%	Population count	%
2000		-		-		-	0	-	0	-	0	-
2001		-		-		-		-		-	0	-
2002		-		-		-		-	0	-	0	-
2003		-		-		-		-	0	-	0	-
2004		-		-		-		-	0	-	0	-
2005		-		-		-		-	0	-	0	-
2006		-		-		-		-	0	-	0	-
2007		-		-		-		-	0	-	0	-
2008		-		-		-		-		-	0	-
2009		-		-		-		-	0	-	0	-
2010		-		-		-		-	0	-	0	-
2011		-		-		-		-	0	-	0	-
2012		-		-		-		-	0	-	0	-
2013		-		-		-		-		-	0	-
2014		-		-		-		-		-	0	-
2015		-		-		-		-		-	0	-
2016		-		-		-		-		-	0	-
2017		-		-		-		-		-	0	-
2018		-		-		-		-		-	0	-
2019		-		-		-		-		-	0	-
2020		-		-		-		-		-	-	-
2021		-		-		-		-		-	-	-

SO-3: To mitigate, adapt to, and manage the effects of drought in order to enhance resilience of vulnerable populations and ecosystems.

Qualitative assessment

Interpretation of the indicator

General comments

## SO3-3 Trends in the degree of drought vulnerability

### Drought Vulnerability Index

#### SO3-3.T1: National estimates of the Drought Vulnerability Index

Year	Total country-level DVI value (tier 1)	Male DVI value (tiers 2 and 3 only)	Female DVI value (tiers 2 and 3 only)
2000			
2001			
2002			
2003			
2004			
2005			
2006			
2007			
2008			
2009			
2010			
2011			
2012			
2013			
2014			
2015			
2016			
2017			
2018	0.32		
2019			
2020			
2021			

### Method

Which tier level did you use to compute the DVI?

- Tier 1 Vulnerability Assessment ⓘ
- Tier 2 Vulnerability Assessment ⓘ
- Tier 3 Vulnerability Assessment ⓘ

### Qualitative assessment

#### SO3-3.T2: Interpretation of the indicator

Change in the indicator	Comments

### General comments

S0-3: To mitigate, adapt to, and manage the effects of drought in order to enhance resilience of vulnerable populations and ecosystems.

## S03 Voluntary Targets

S03-VT.T1

Target	Year	Level of application	Status of target achievement	Comments
--------	------	----------------------	------------------------------	----------

General comments



# S04-1 Trends in carbon stocks above and below ground

## Soil organic carbon stocks

Trends in carbon stock above and below ground is a multi-purpose indicator used to measure progress towards both strategic objectives 1 and 4. Quantitative data and a qualitative assessment of trends in this indicator are reported under strategic objective 1, progress indicator S01-3.

## SO4-2 Trends in abundance and distribution of selected species

### SO4-2.T1: National estimates of the Red List Index of species survival

Year	Red List Index	Lower Bound	Upper Bound	Comment
2000				
2001				
2002				
2003				
2004				
2005				
2006				
2007				
2008				
2009				
2010	0			
2011				
2012				
2013				
2014				
2015				
2016				
2017				
2018				
2019				
2020				

### Qualitative assessment

#### SO4-2.T2: Interpretation of the indicator

Change in the indicator	Drivers: Direct (Choose one or more items)	Drivers: Indirect (Choose one or more items)	Which levers are being used to reverse negative trends and enable transformative change?	Responses that led to positive RLI trends	Comments

### General comments

**SO4-3 Proportion of important sites for terrestrial and freshwater biodiversity that are covered by protected areas, by ecosystem type**

SO4-3.T1: National estimates of the average proportion of Terrestrial KBAs covered by protected areas (%)

Year	Protected Areas Coverage(%)	Lower Bound	Upper Bound	Comments
2000				
2001				
2002				
2003				
2004				
2005				
2006				
2007				
2008				
2009				
2010				
2011				
2012				
2013				
2014				
2015				
2016				
2017				
2018				
2019				
2020				

**Qualitative assessment**

SO4-3.T2: Interpretation of the indicator

Qualitative Assessment	Comment

**General comments**

## S04 Voluntary Targets

S04-VT.T1

Target	Year	Level of application	Status of target achievement	Comments
--------	------	----------------------	------------------------------	----------

[Complementary information](#)

## S05-1 Bilateral and multilateral public resources

**Tier 1: Please provide information on the international public resources provided and received for the implementation of the Convention, including information on trends.**

Trends in international bilateral and multilateral public resources provided

- Up ↑
- Stable ↔
- Down ↓
- Unknown ↻

Trends in international bilateral and multilateral public resources received

- Up ↑
- Stable ↔
- Down ↓
- Unknown ↻

Tier 2: Table 1 Financial resources provided and received

Provided / Received	Year	Total Amount USD	
		Committed	Disbursed / Received
Provided	2016	Committed	Disbursed
Provided	2017	Committed	Disbursed
Provided	2018	Committed	Disbursed
Provided	2019	Committed	Disbursed
Received	2016	Committed	Received
Received	2017	Committed	Received
Received	2018	Committed	Received
Received	2019	Committed	Received
Total resources provided:		0	0
Total resources received:		0	0

### Documentation box

	Explanation
Year	
Recipient / Provider	
Title of project, programme, activity or other	
Total Amount USD	
Sector	
Capacity Building	
Technology Transfer	
Gender Equality	
Channel	
Type of flow	
Financial Instrument	
Type of support	
Amount mobilised through public interventions	

SO-5: To mobilize substantial and additional financial and non-financial resources to support the implementation of the Convention by building effective partnerships at global and national level

	Explanation
Additional Information	

General comments

## S05-2 Domestic public resources

**Tier 1: Please provide information on the domestic public expenditures, including subsidies, and revenues, including taxes, directly and indirectly related to the implementation of the Convention, including information on trends.**

Trends in domestic public expenditures and national level financing for activities relevant to the implementation of the Convention

- Up ↑  
 Stable ↔  
 Down ↓  
 Unknown ∞

Trends in domestic public revenues from activities related to the implementation of the Convention

- Up ↑  
 Stable ↔  
 Down ↓  
 Unknown ∞

### Tier 2: Table 2 Domestic public resources

	Year	Amounts	Additional Information
Government expenditures			
Directly related to combat DLDD			
Indirectly related to combat DLDD			
Subsidies			
Subsidies related to combat DLDD			
Total expenditures / total per year			

	Year	Amounts	Additional Information
Government revenues			
Environmental taxes for the conservation of land resources and taxes related to combat DLDD			
Total revenues / total per year			

### Documentation box

	Explanation
Government expenditures	
Subsidies	
Government revenues	
Domestic resources directly or indirectly related to combat DLDD	

Has your country set a target for increasing and mobilizing domestic resources for the implementation of the Convention?

- Yes  
 No

### General comments

### S05-3 International and domestic private resources

Tier 1: Please provide information on the international and domestic private resources mobilized by the private sector of your country for the implementation of the Convention, including information on trends.

Trends in international private resources

- Up ↑
- Stable ↔
- Down ↓
- Unknown ∞

Trends in domestic private resources

- Up ↑
- Stable ↔
- Down ↓
- Unknown ∞

#### Tier 2: Table 3 International and domestic private resources

Year	Title of project, programme, activity or other	Total Amount USD	Financial Instrument	Type of institution	Recipient	Additional Information
	Total	0				

Please provide methodological information relevant to data presented in table 3

Has your country taken measures to encourage the private sector as well as non-governmental organizations, foundations and academia to provide international and domestic resources for the implementation of the Convention?

[General comments](#)



## S05-4 Technology transfer

Tier 1: Please provide information relevant to the resources provided, received for the transfer of technology for the implementation of the Convention, including information on trends.

Trends in international bilateral and multilateral public resources provided

- Up ↑
- Stable ↔
- Down ↓
- Unknown ⇄

Trends in international bilateral and multilateral public resources received

- Up ↑
- Stable ↔
- Down ↓
- Unknown ⇄

Tier 2: Table 4 Resources provided and received for technology transfer measures or activities

Provided/Received	Year	Title of project, programme, activity or other	Amount	Recipient Provider	Description and objectives	Sector	Type of technology	Activities undertaken by	Status of measure or activity	Timeframe of measure or activity	Use, impact and estimated results	Additional Information
Total provided:			0	Total received:			0					

Please provide methodological information relevant to data presented in table 4

Include information on underlying assumptions, definitions and methodologies used to identify and report on technology transfer support provided and/or received and/or required. Please include links to relevant documentation.

Please provide information on the types of new or current technologies required by your country to address desertification, land degradation and drought (DLDD), and the challenges encountered in acquiring or developing such technologies.

General comments

## SO5-5 Future support for activities related to the implementation of the Convention

### SO5-5.1: Planned provision and mobilization of domestic public and private resources

Please provide information relevant to the planned provision and mobilization of domestic resources for the implementation of the Convention, including information relevant to indicator SO5-2, as well as information on projected levels of public financial resources, target sectors and planned domestic policies.

### SO5-5.2: Planned provision and mobilization of international public and private resources

Please provide information relevant to the planned provision and mobilization of international resources for the implementation of the Convention, including information on projected levels of public financial resources and support to capacity building and transfer of technology, target regions or countries, and planned programmes, policies and priorities.

### SO5-5.3: Resources needed

Please provide information relevant to the financial resources needed for the implementation of the Convention, including on the projects and regions which needs most support and on which your country has focused to the greatest extent.

### General comments

## Financial and Non-Financial Sources

### Increasing the mobilization of resources:

Would you like to share an experience on how your country has increased the mobilization of resources within the reporting period?

- Yes
- No

### Using Land Degradation Neutrality as a framework to increase investment:

From your perspective, would you consider that you have taken advantage of the LDN concept to enhance the coherence, effectiveness and multiple benefits of investments?

- Yes
- No

### Improving existing and/or innovative financial processes and institutions

From your perspective, do you consider that your country has improved the use of existing and/or innovative financial processes and institutions?

- Yes
- No

## Policy and Planning

### Action Programmes:

Has your country developed or helped develop, implement, revise or regularly monitor your national action programme?

- Yes  
 No

### Policies and enabling environment:

During the reporting period, has your country established or helped establish policies and enabling environments to promote and/or implement solutions to combat desertification/land degradation and mitigate the effects of drought?

- Yes  
 No

### Synergies:

From your perspective, has your country leveraged synergies and integrated DLDD into national plans related to other MEAs, particularly the other Rio Conventions and other international commitments?

- Yes  
 No

### Mainstreaming desertification, land degradation and drought:

From your perspective, did your country take specific actions to mainstream, DLDD in economic, environmental and social policies, with a view to increasing the impact and effectiveness of the implementation of the Convention?

- Yes  
 No

### Drought-related policies:

Has your country established or is your country establishing national policies, measures and governance for drought preparedness and management?

- Yes  
 No

Has your country supported other countries in establishing policies, measures and governance for drought preparedness and management, in accordance with the mandate of the Convention?

- Yes  
 No

## Action on the Ground

### Sustainable land management practices:

Has your country implemented or is your country implementing sustainable land management (SLM) practices to address DLDD?

- Yes  
 No

Has your country supported other countries in the implementation of SLM practices?

- Yes  
 No

### Restoration and Rehabilitation:

Has your country implemented or is your country implementing restoration and rehabilitation practices in order to assist with the recovery of ecosystem functions and services?

- Yes  
 No

### Drought risk management and early warning systems:

Is your country developing a drought risk management plan, monitoring or early warning systems and safety net programmes to address DLDD?

- Yes  
 No

Has your country supported other countries in developing drought risk management, monitoring and early warning systems and safety net programmes to address DLDD?

- Yes  
 No

### Alternative livelihoods:

Does your country promote alternative livelihoods practice in the context of DLDD?

- Yes  
 No

Do you consider your country to be taking special measures to engage women and youth in promoting alternative livelihoods?

- Yes  
 No

### Establishing knowledge sharing systems:

Has your country established systems for sharing information and knowledge and facilitating networking on best practices and approaches to drought management?

- Yes  
 No

Do you consider that your country has implemented specific actions that promote women's access to knowledge and technology?

Yes

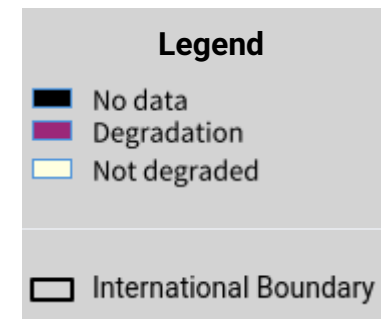
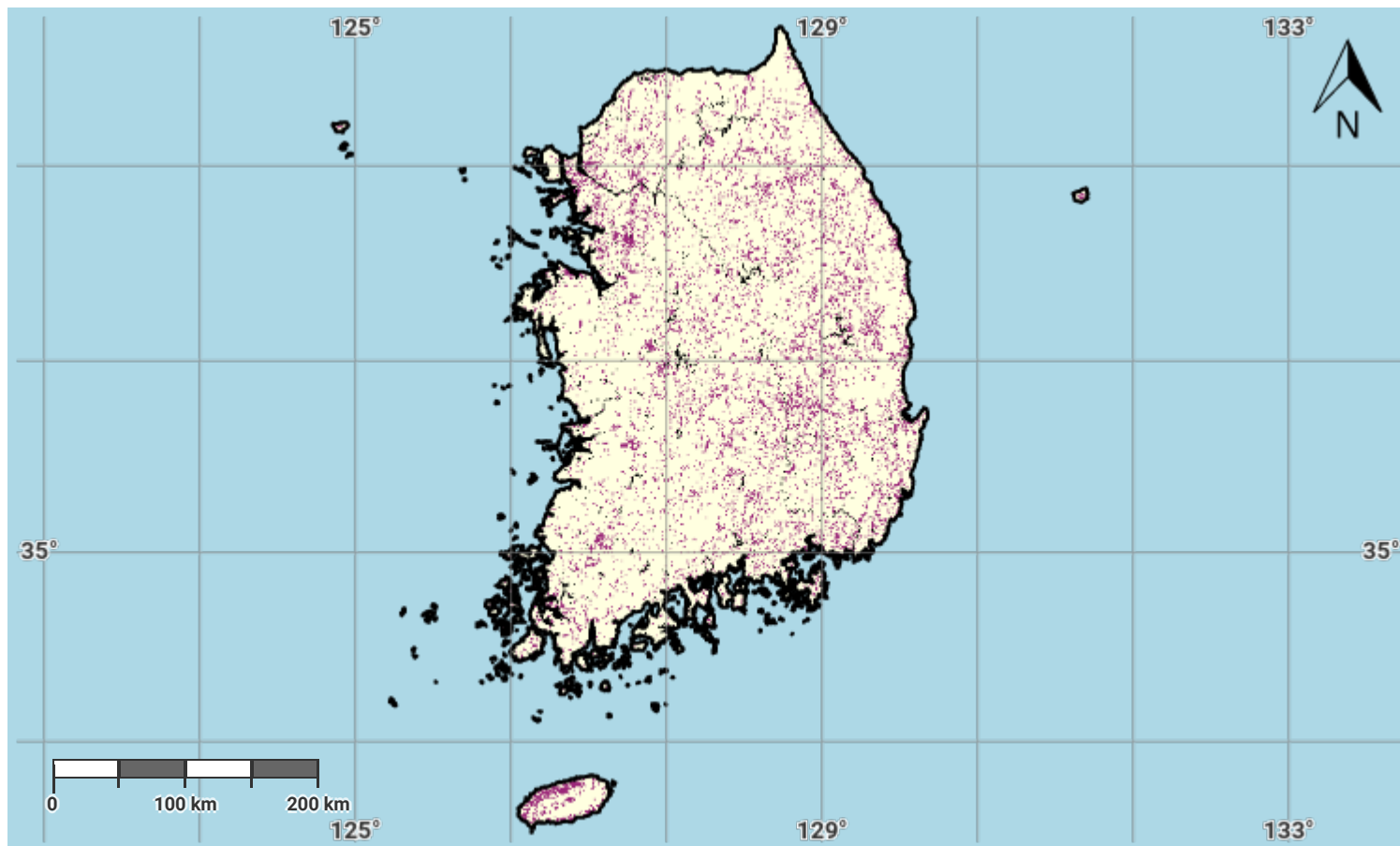
No

Other files for Reporting

Republic of Korea - S05-1 provider	<a href="#">Download</a>	44.6 KB
------------------------------------	--------------------------	---------

## Republic of Korea – S01-4.M2

### Proportion of land that is degraded over total land area (SDG Indicator 15.3.1) in the reporting period



Projection: EPSG:3857 (Web Mercator)

#### Disclaimer

The designations employed and the presentation of material on this map do not imply the expression of any opinion whatsoever on the part of the Secretariat of the United Nations Convention to Combat Desertification (UNCCD) concerning the legal status of any country, territory, city or area or of its authorities, or concerning the delimitation of its frontiers or boundaries. All maps represent the terrestrial area of the country; offshore islands, overseas departments and territories may not be displayed due to cartographic limitations.

#### Source Data Credits

- United Nations Clear Map, United Nations Geospatial.
- Derived based on the methodology in the Good Practice Guidance Version 2 for Sustainable Development Goal (SDG) indicator 15.3.1 - Proportion of land that is degraded over total land area. URL: <https://www.unccd.int/publications/good-practice-guidance-sdg-indicator-1531-proportion-land-degraded-over-total-land>